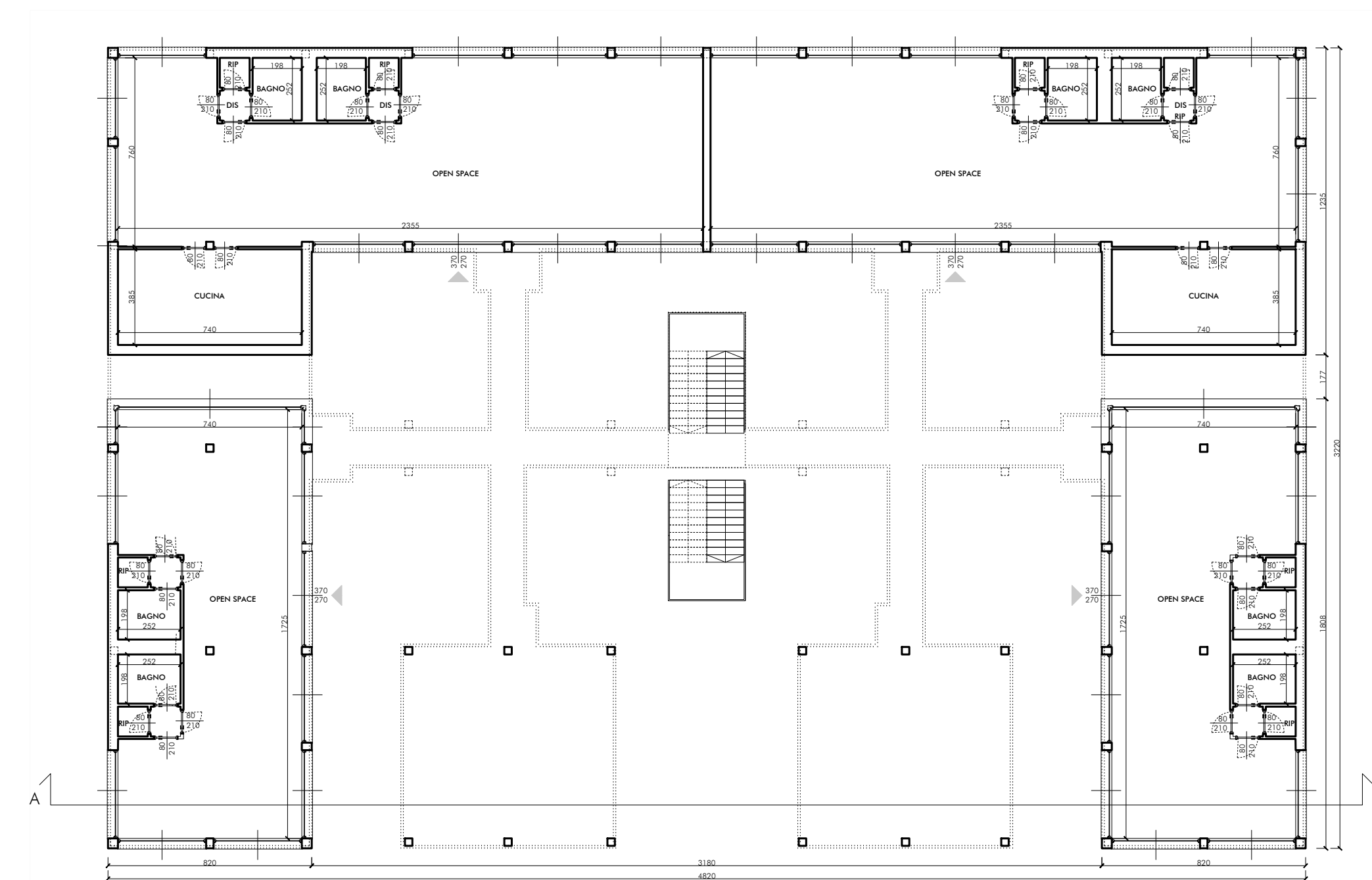
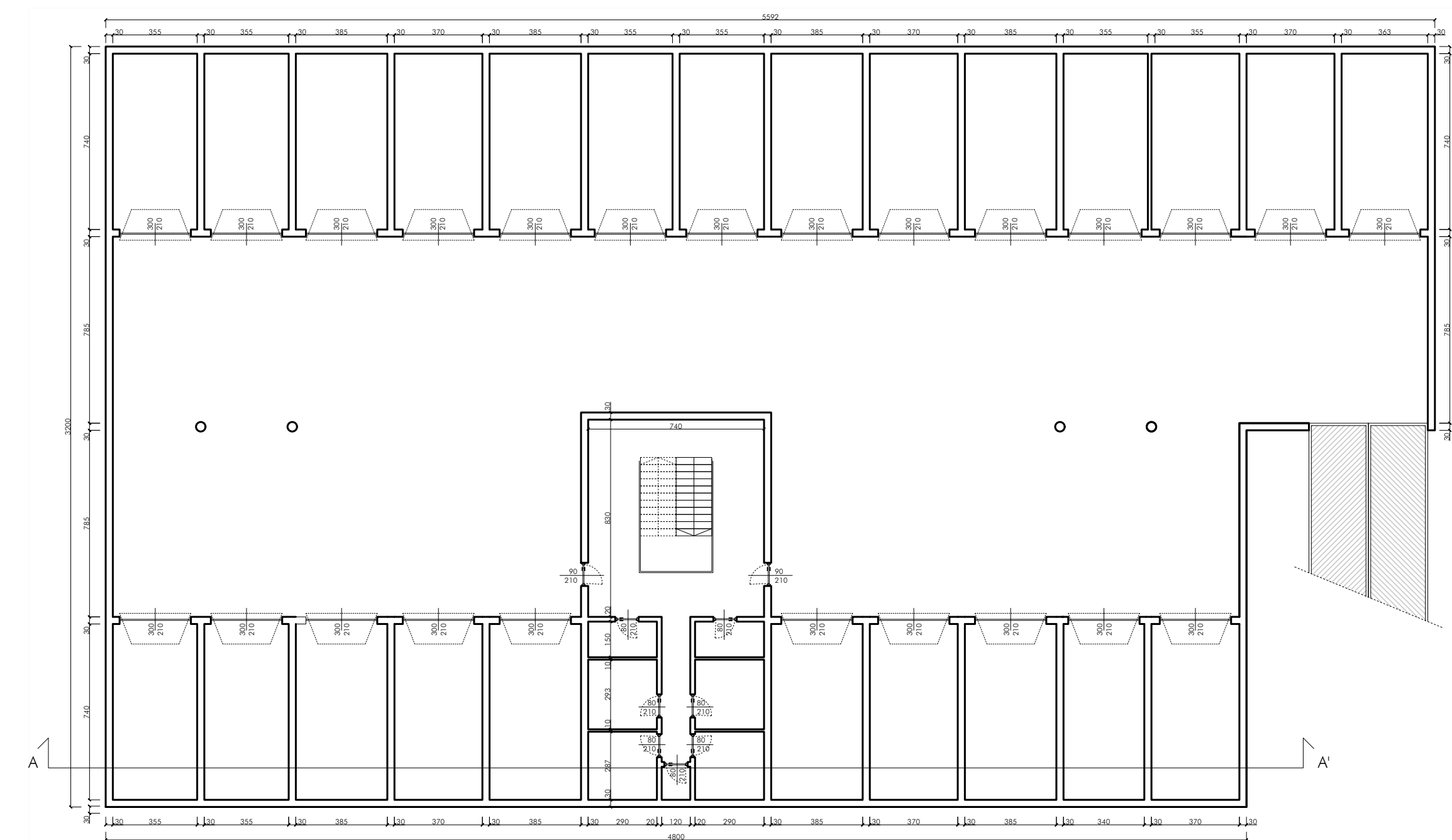


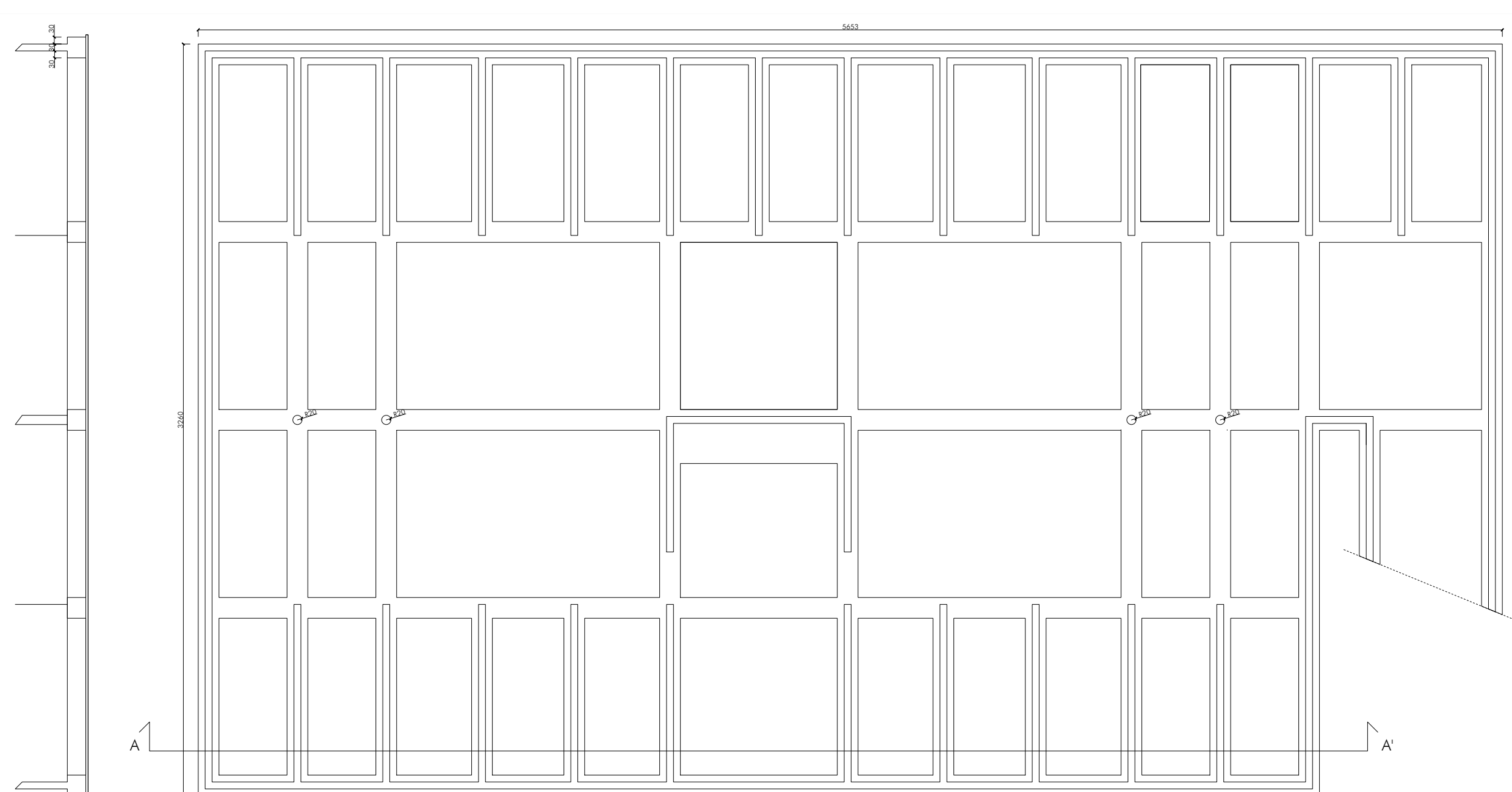
Pianta piano terra



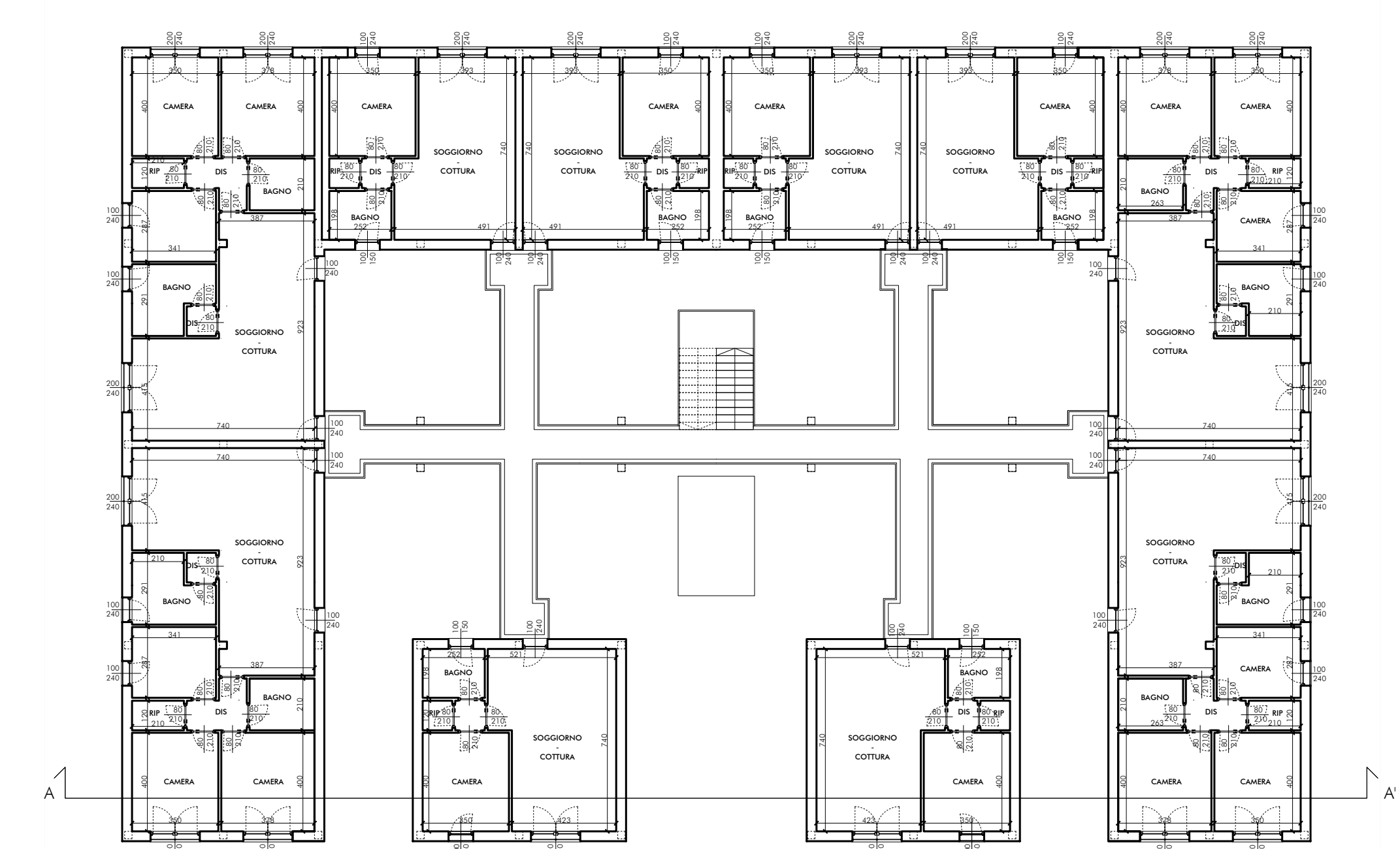
Pianta piano interrato



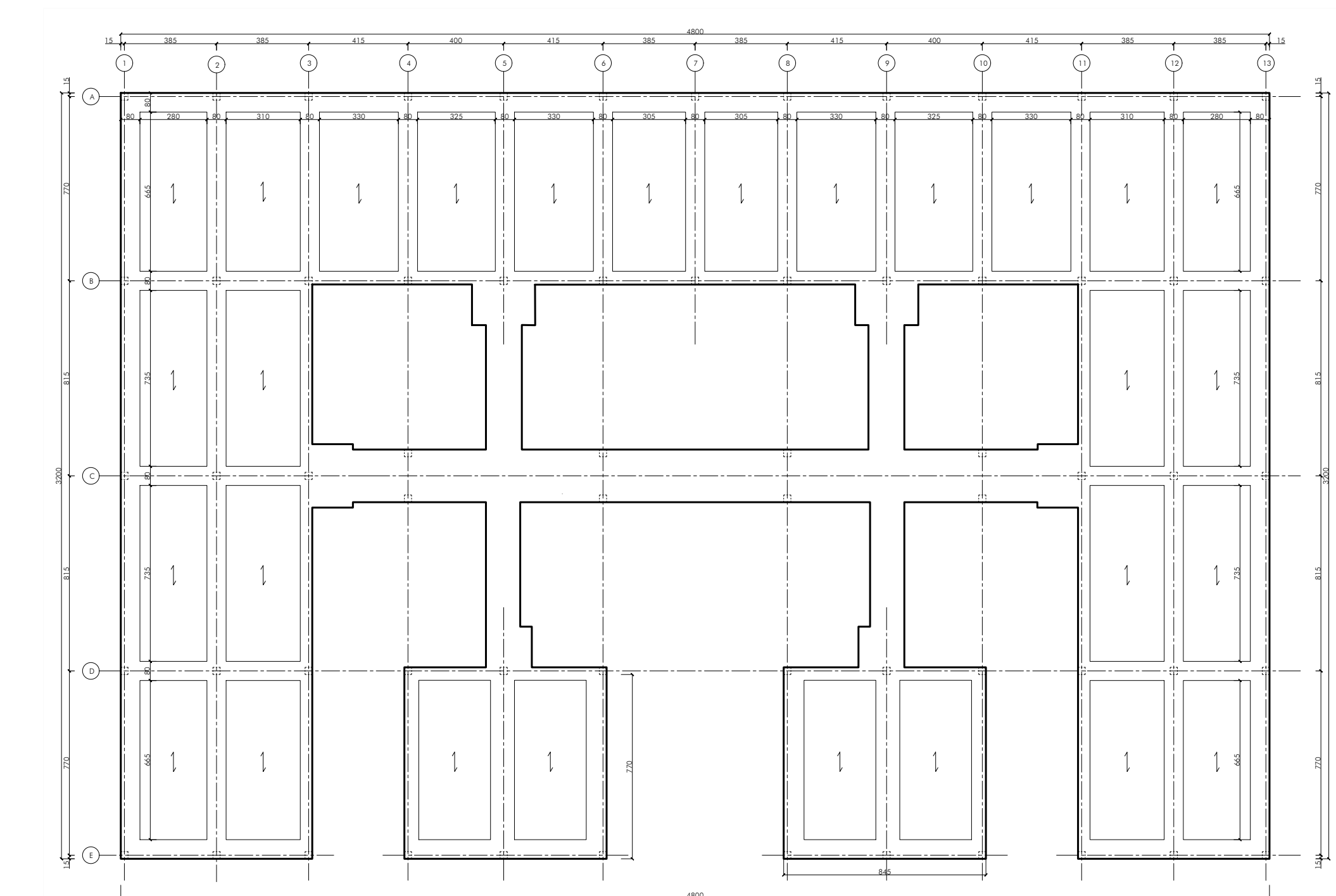
Pianta delle fondazioni



Pianta piano 1° e 2°



Schema strutturale



Dimensione pilastri

□ L30xL30cm

Dimensione travi

■ L80xh32cm

Dimensione solaio

□ h=28+4=32cm

Dimensione fondazioni a trave rovescia

□ L90xh80cm