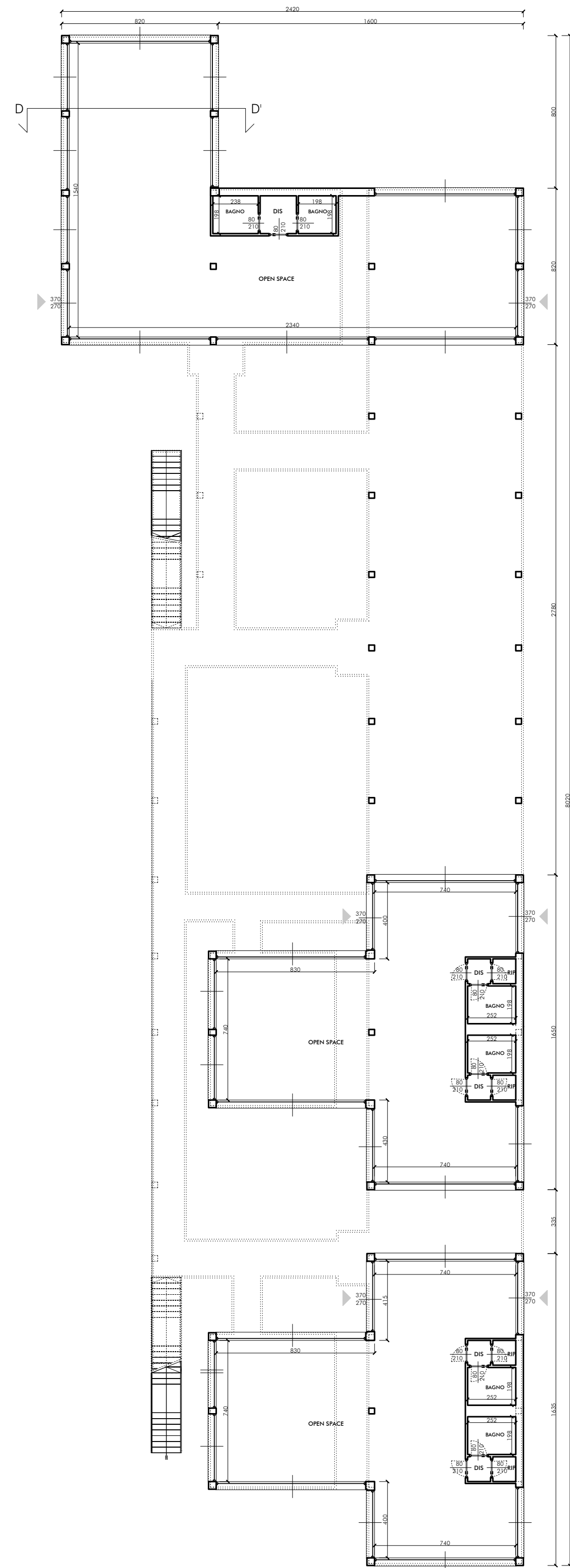
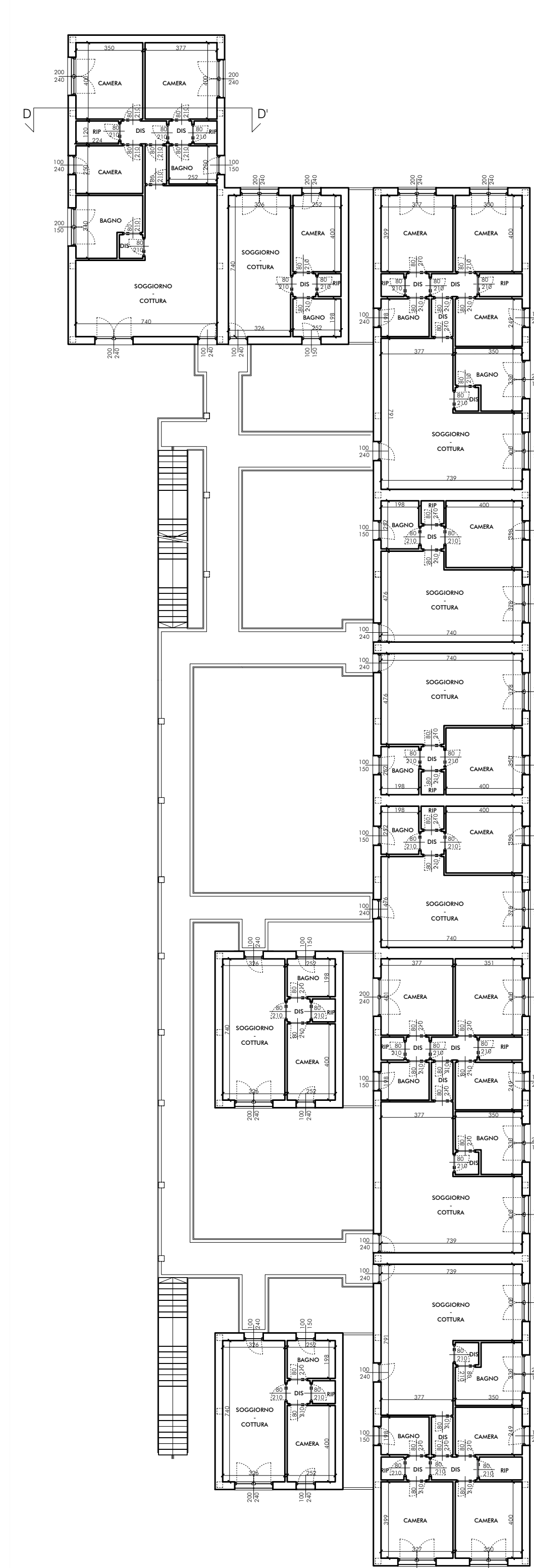


Edificio 4

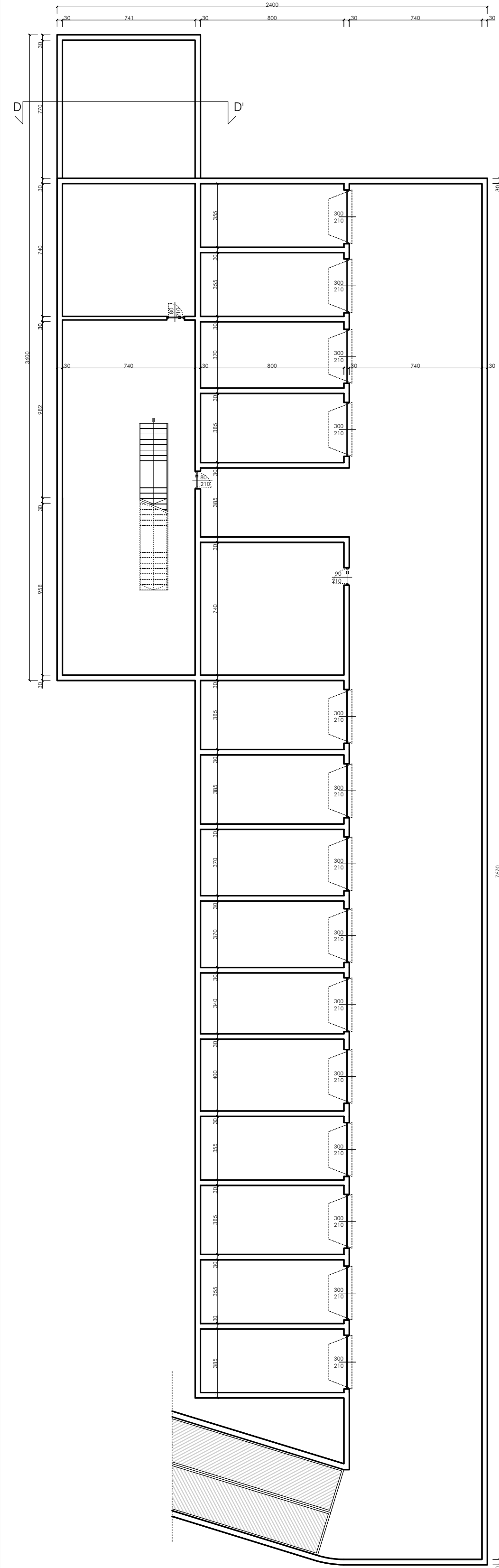
Pianta piano terra



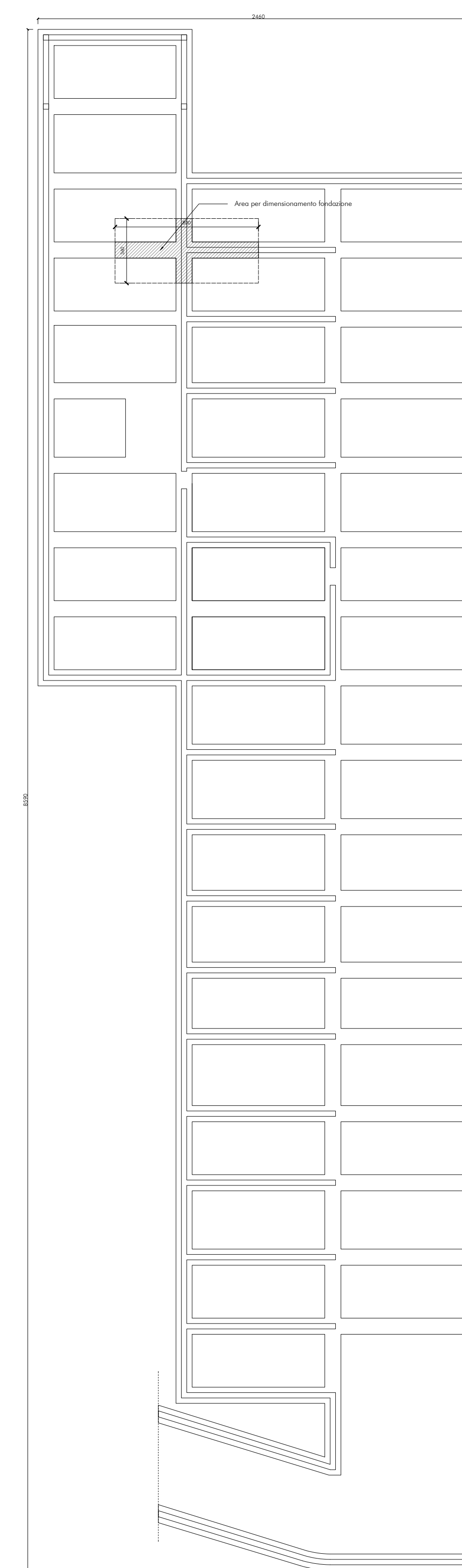
Pianta piano 1°



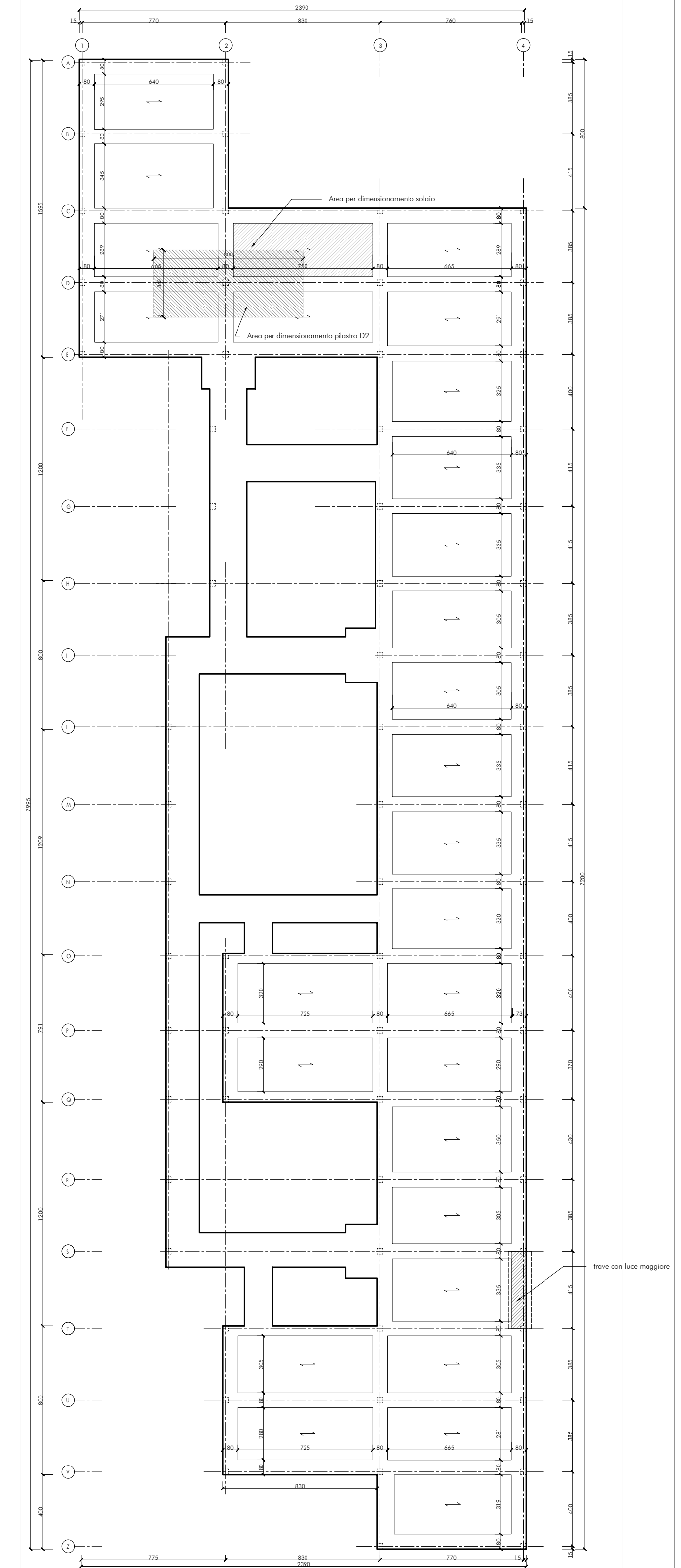
Pianta piano interrato



Pianta delle fondazioni



Schema strutturale



- Dimensione pilastri Dimensione solaio
 □ L30xL30cm □ h=28+4=32cm
- Dimensione travi Dimensione fondazioni a trave rovescia
 ■ L80xh32cm □ L90xh80cm

