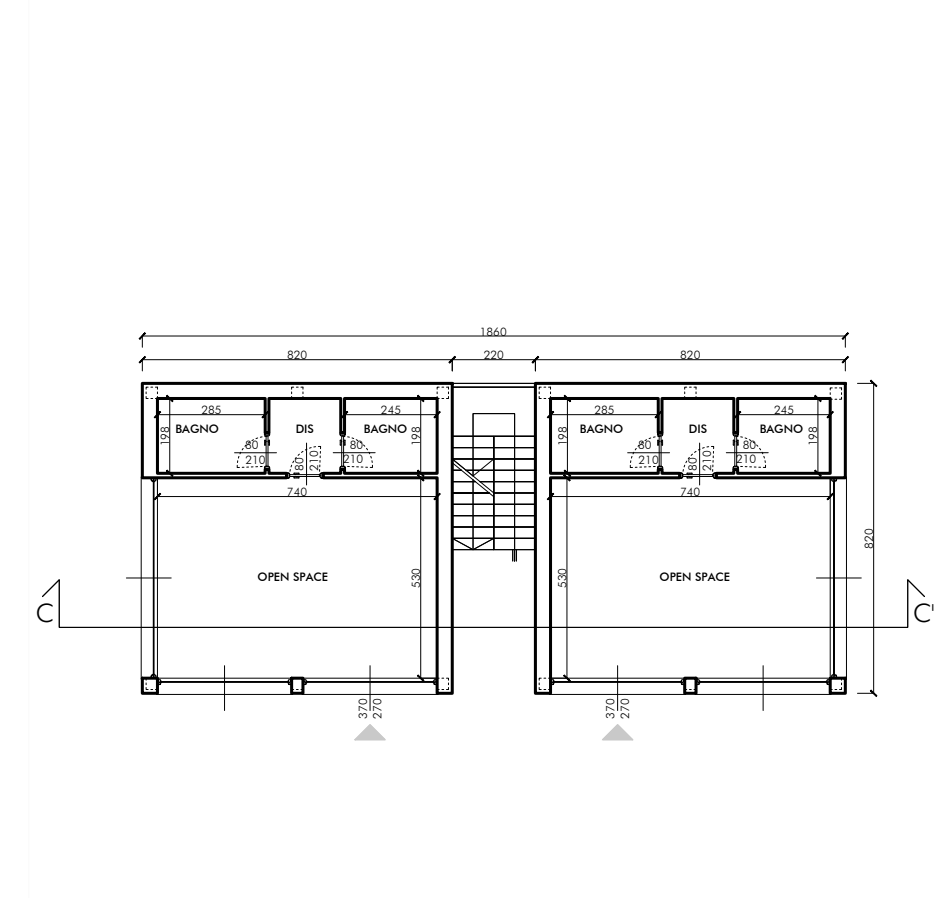
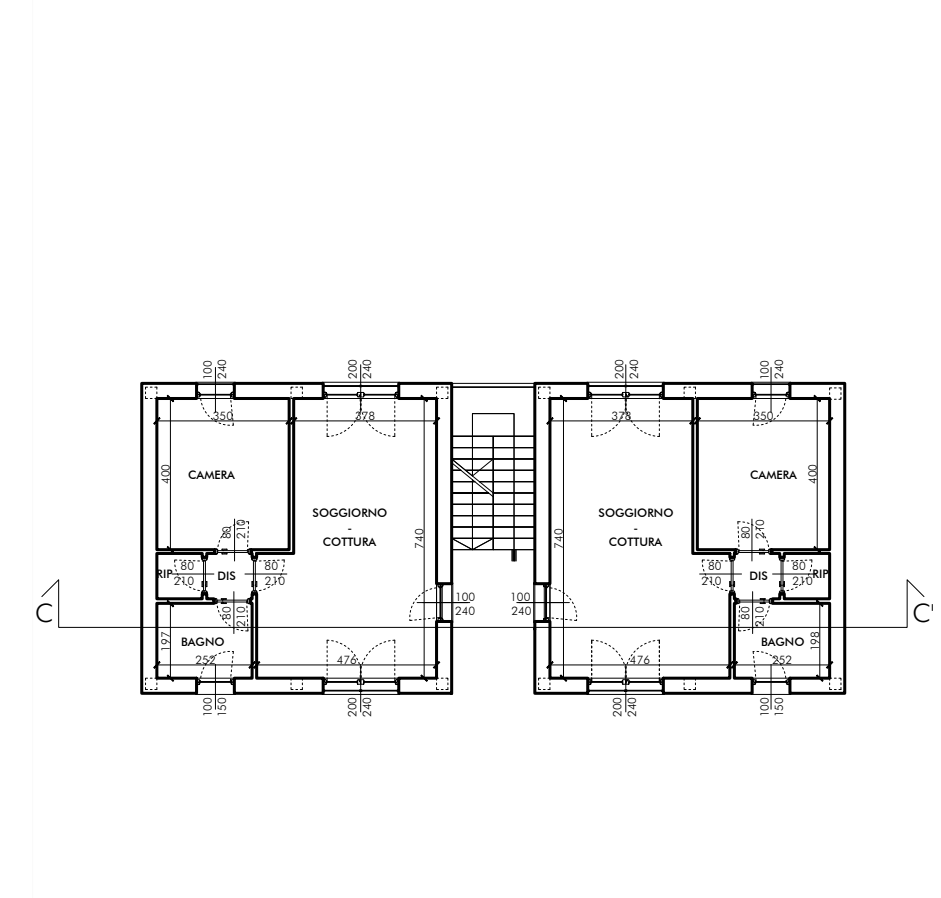


## Edificio 2

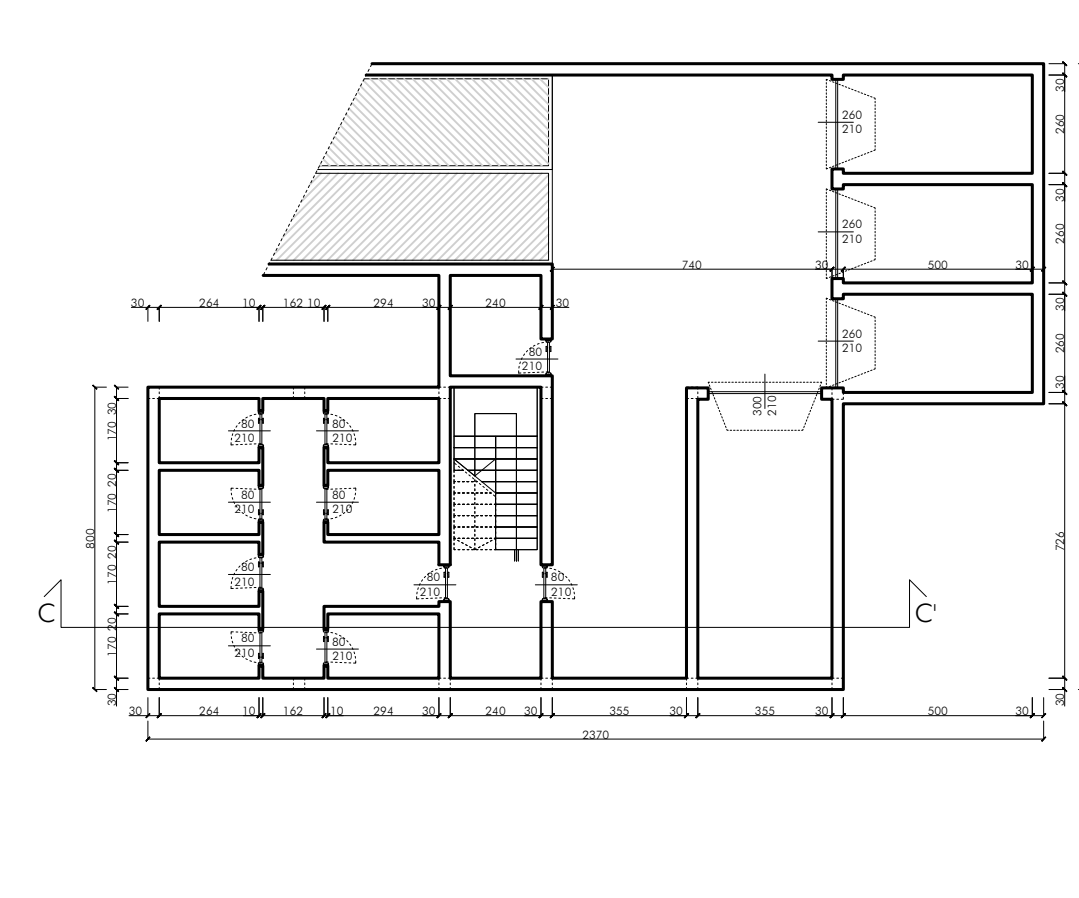
Pianta piano terra



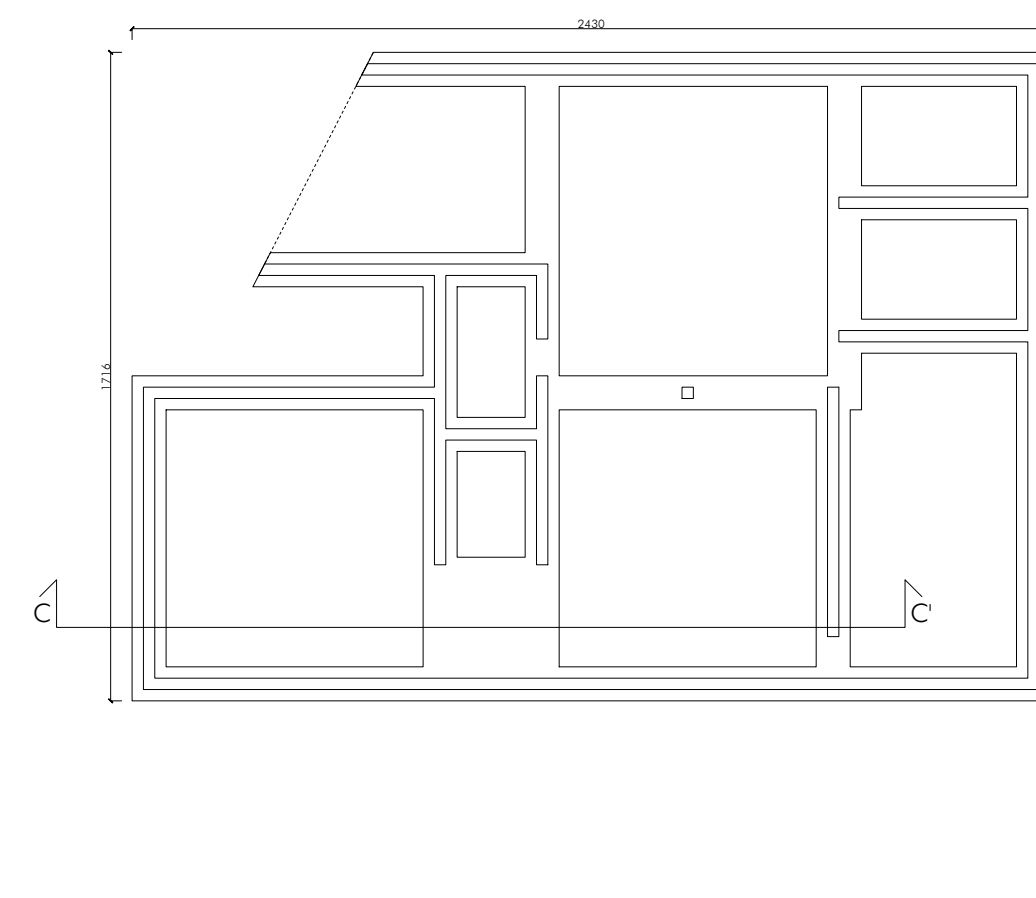
Pianta piano 1° e 2°



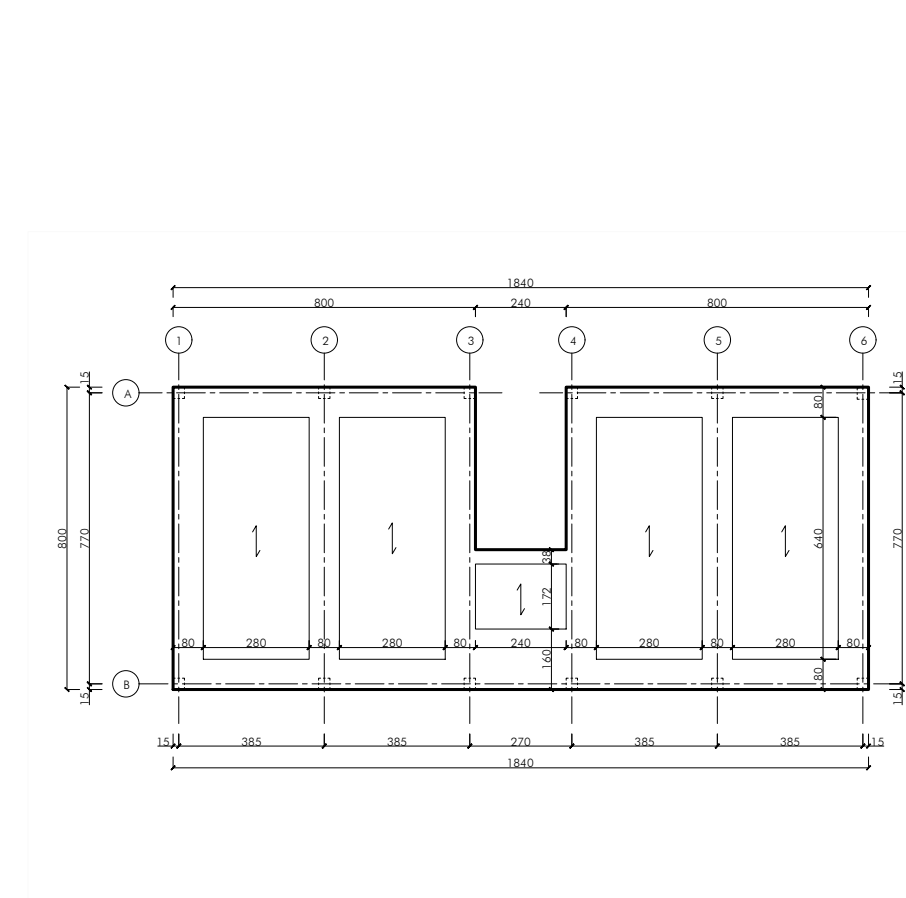
Pianta piano interrato



Pianta delle fondazioni

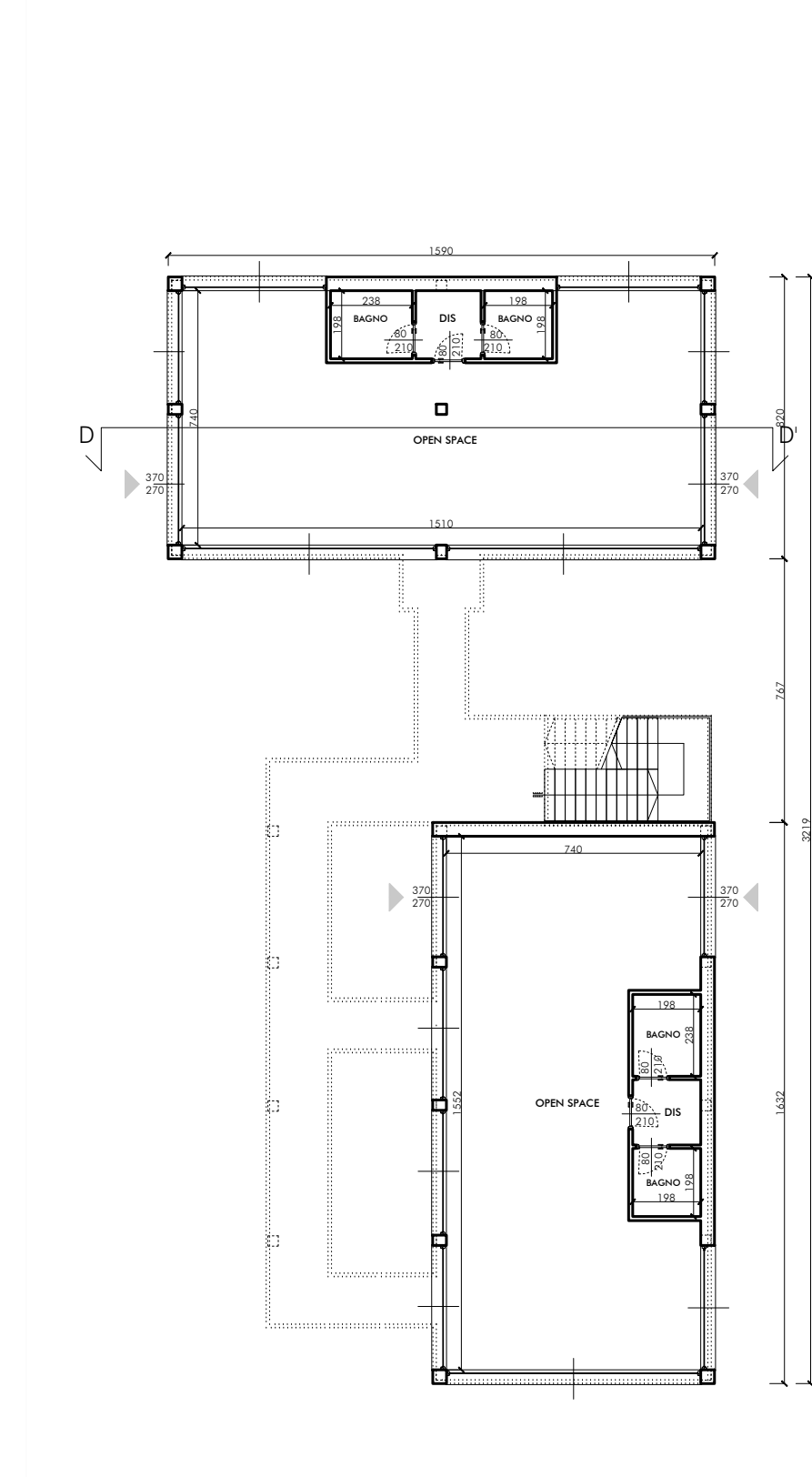


Schema strutturale

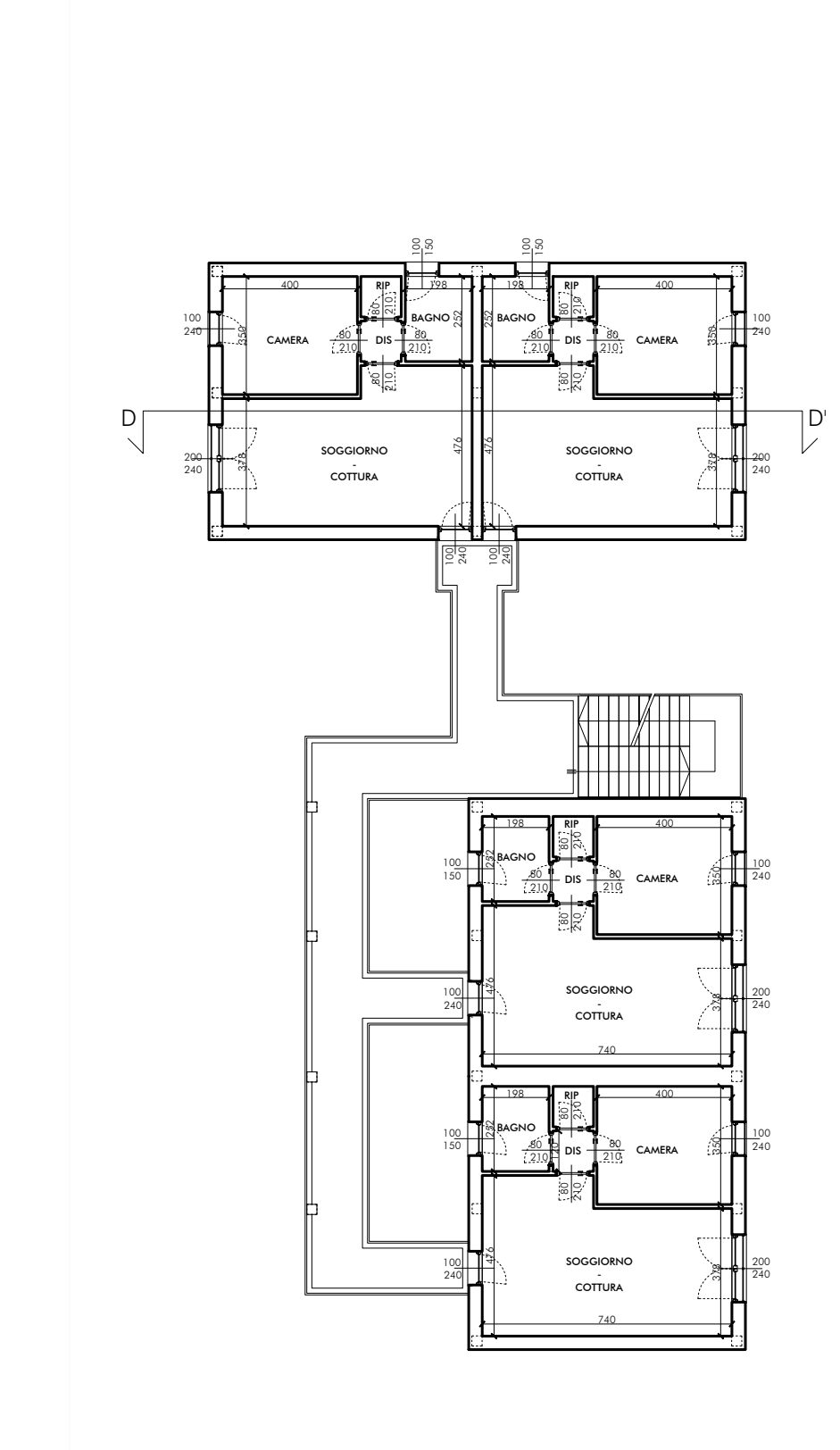


## Edificio 3

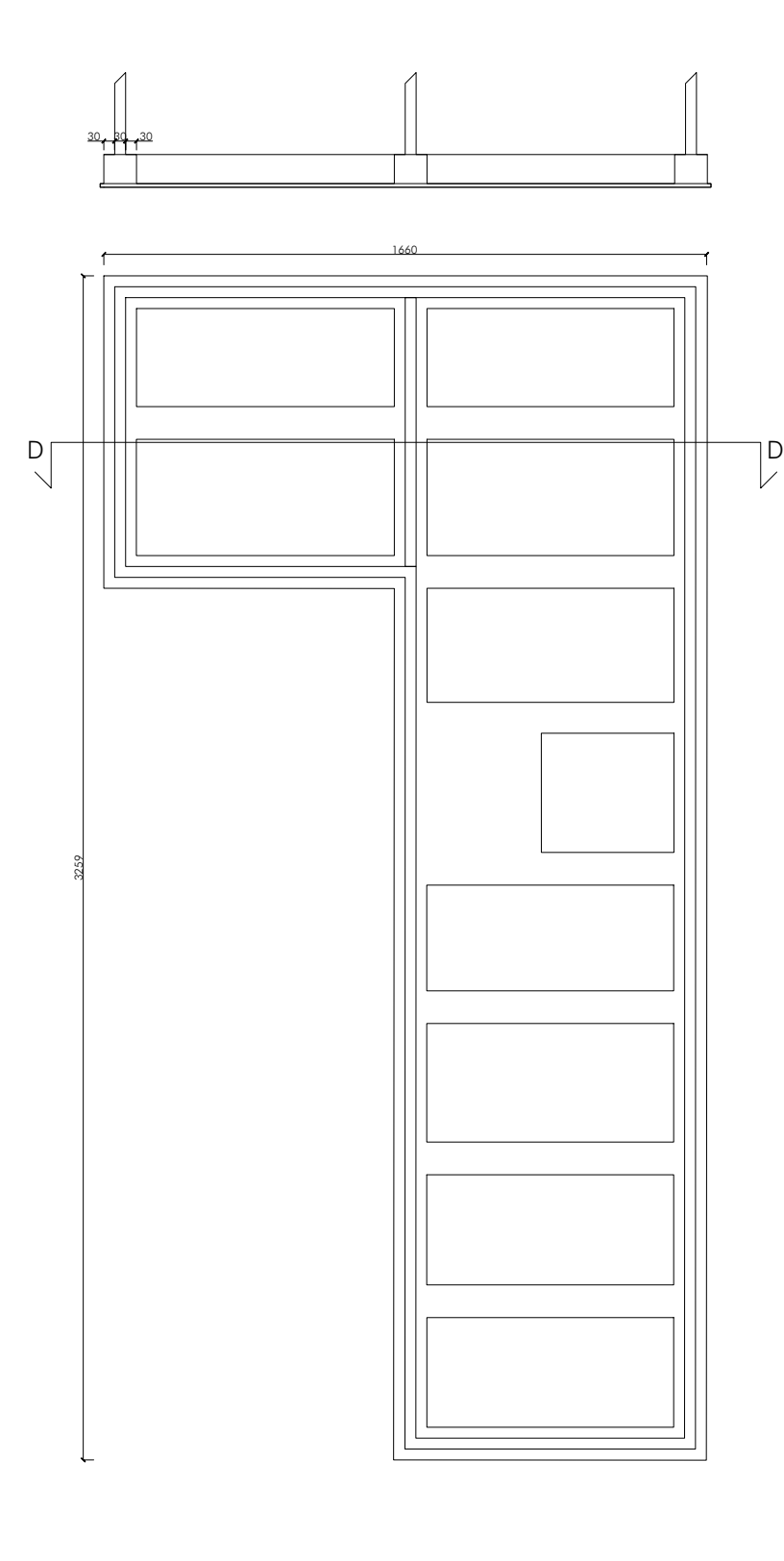
Pianta piano terra



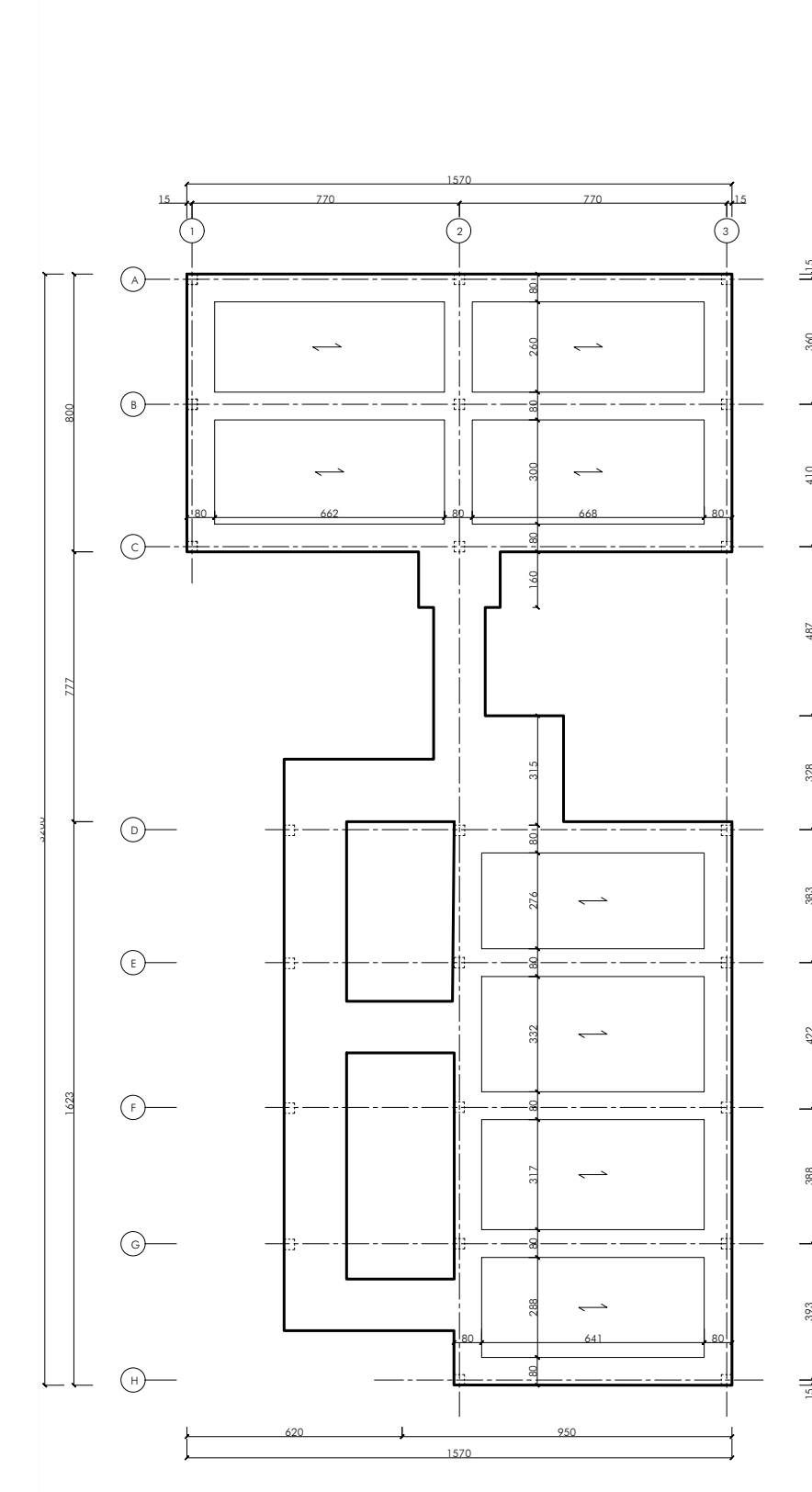
Pianta piano 1° e 2°



Pianta delle fondazioni



Schema strutturale



Dimensione pilastri

□ L30xL30cm

Dimensione travi

■ L80xh32cm

Dimensione solaio

▬ h=28+4=32cm

Dimensione fondazioni a trave rovescia

□ L90xh80cm